

# Community Perspectives in Mining

Chandra Kirana, Revenue Watch Institute Asia Pacific Regional Coordinator – For the Expert Meeting on MCDA, CORDAID, June 10, 2011.

## DIFFERENT WORLDS AND IMAGINATIONS

### The Immediate Relationship - Lost in translation



#### Corporate talk:

- Equator Principles?
- Global Reporting Initiatives?
- Voluntary Principles of Human Rights?
- CDMAs?
- EITI?
- Reputational risks, social license, profits

#### Community talk:

- Forests are our soul
- As far as you can see, to the end of the horizon – this is our land.
- The mountains and the rivers are sacred
- After the mine closes the land will again be ours
- Livelihoods – jobs - survival



## Challenges Faced by Communities in Mining

---

### 1. Immediate challenges:

- Environmental
- Social
- Economic

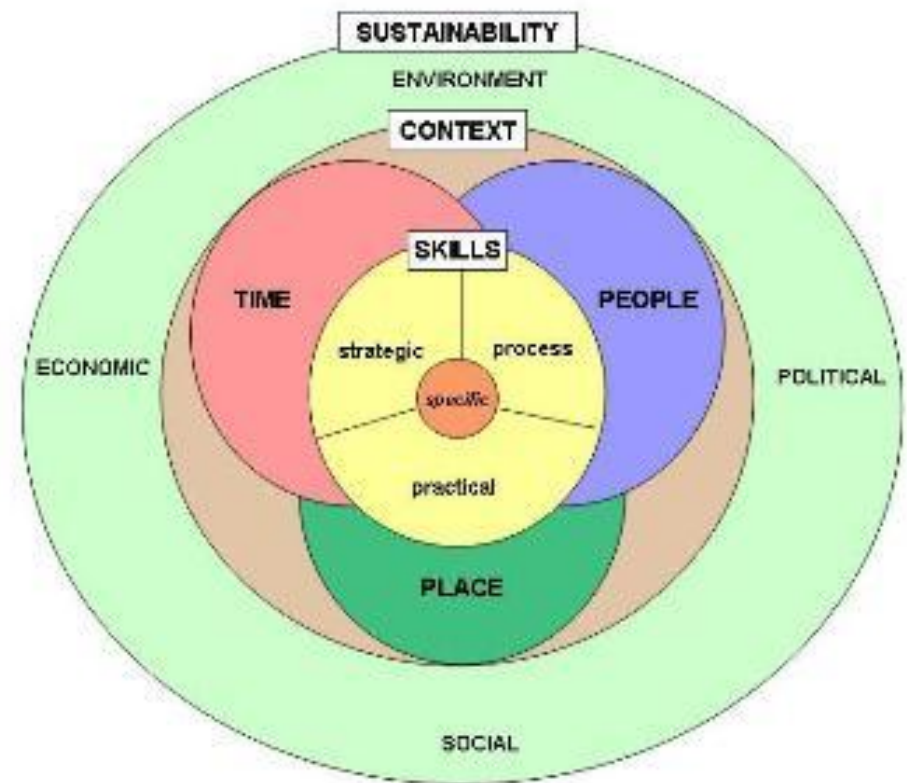
### 2. Long term development challenges

- Most CDMA's primarily focus on the immediate challenges, sometimes at the cost of the long term interests of sustainable development.
  - Communities and Corporations both thinking short term.
-

## Immediate VS Long Term Challenges

Adapting to scale and speed of change:

- Livelihoods
- Jobs
- Changing landscapes
- Displacement
- Community conflicts
- Sudden influx of cash
- Gender and generational issues
- Large scale accidents



## Corporate Standards

---

- 1. In most cases better than national and sub-national mining policies and regulations.**
  - 2. Corporate Standards ‘invisible at the project level’ to governments, communities and NGOs.**
  - 3. CDMAs in most cases address immediate challenges, NOT enough thought into long term sustainability building.**
-

## The Context: The Political Economy

---

### **1. Sub-national:**

- **Corruption**
- **No or poor laws and regulations**
- **Very short term economic interests**

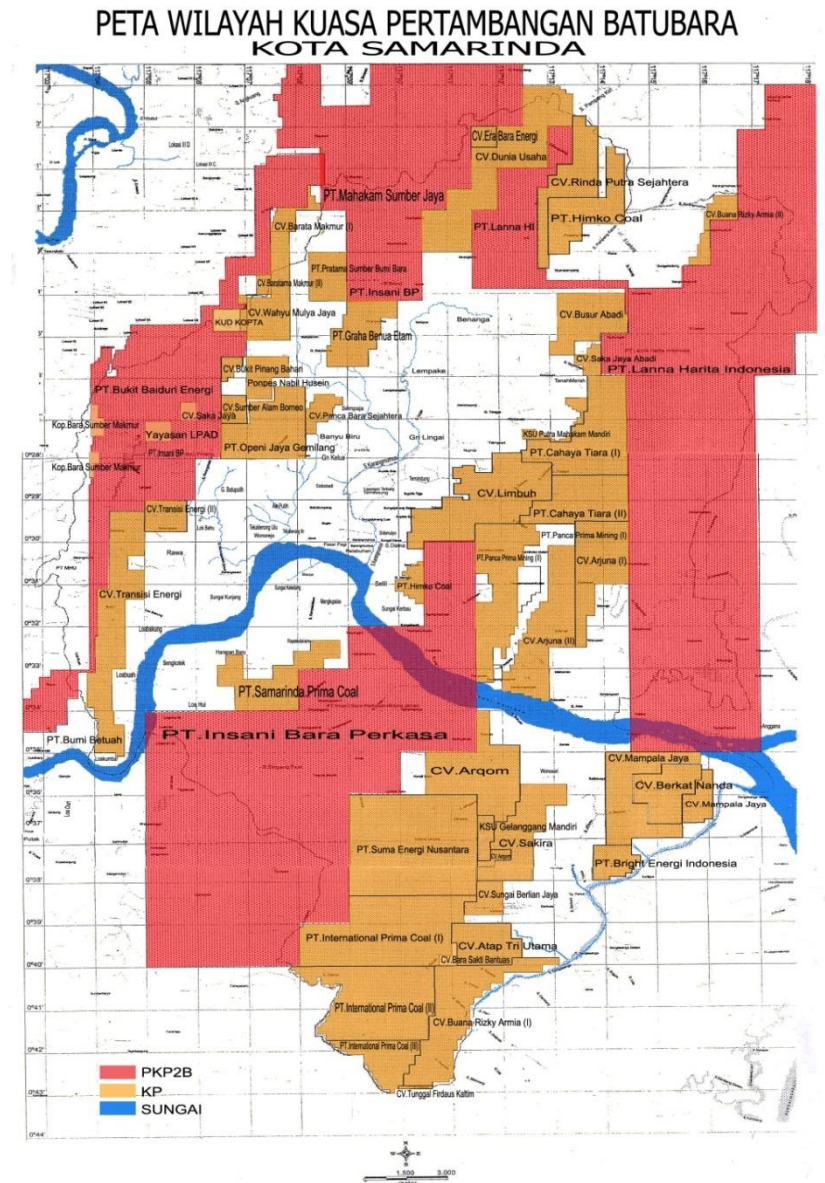
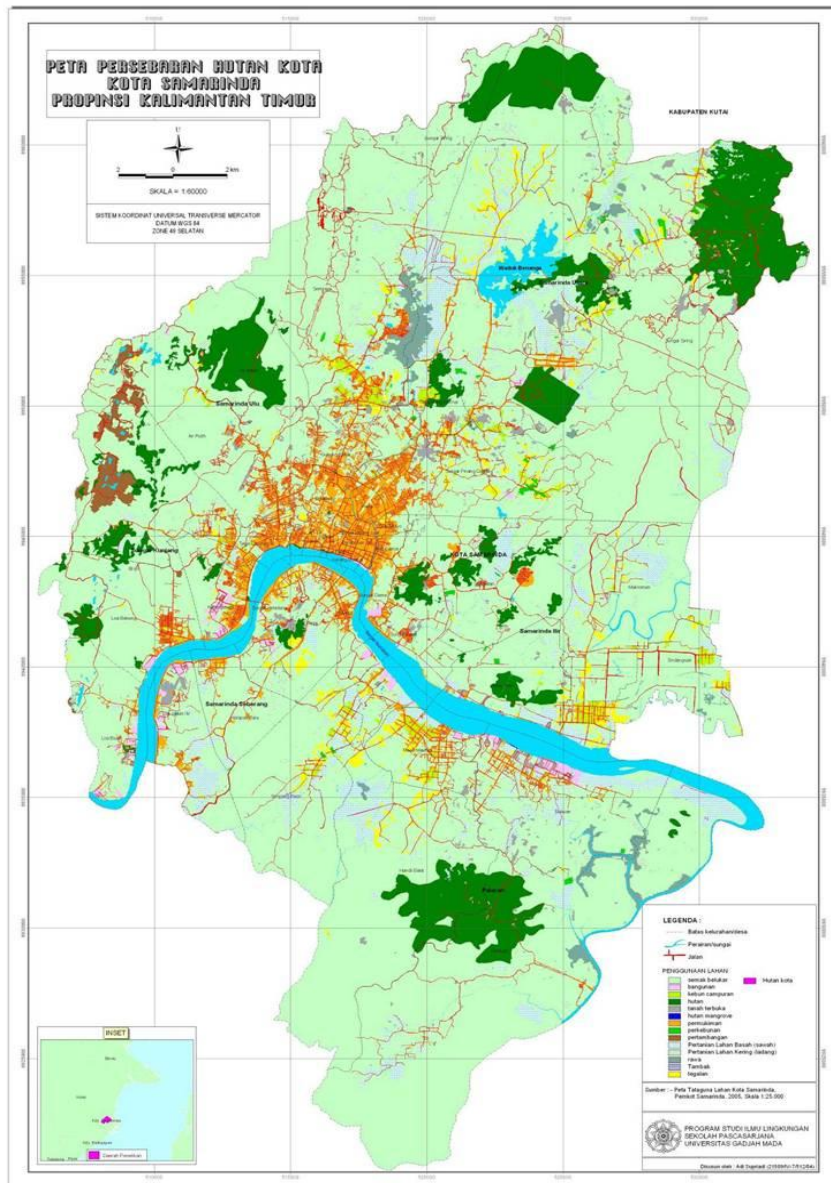
### **2. National**

- **Need investment for growth**
- **Need good macro economic indicators**
- **More and more reputational issues**

### **3. Global**

- **Energy and food crises**
  - **Commodity prices and market volatility**
-

# REALITIES FACED BY COMMUNITIES: LOSE OF VOICE, LAND, OPPORTUNITIES



## How Communities are Trying to Deal

---

- **Learning the language of corporations – Experimenting with Social Accountability in Extractive Industries.**
  - **Working with stakeholders to develop, and implement EITI inspired transparency models at the sub-national level:**
    - Environmental reporting
    - Social, CDMA, CSR reporting
    - Revenue Transparency
  - **Learning how to survive in the world economy: Revenue Management Training.**
-

## Making Change Possible:



- World views
- Corporate best practice standards, gov, NGOs, communities
- International, Regional, National and sub-national governance complexities
- Economies, etc